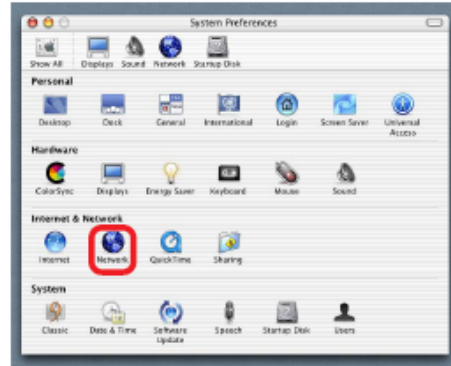
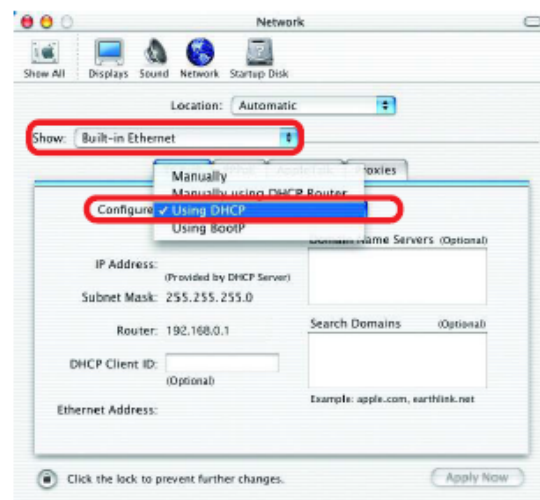


Selecting a Dynamic IP Address with Macintosh OSX

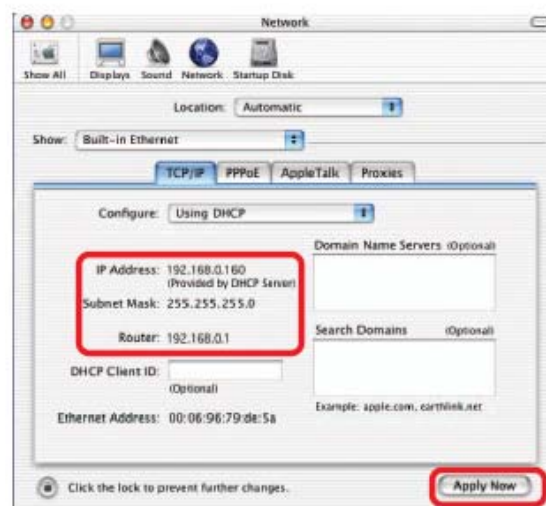
- Go to the **Apple Menu** and select **System Preferences**
- Click on **Network**



- Select **Built-in Ethernet** in the **Show** pull-down menu
- Select **Using DHCP** in the **Configure** pull-down menu



- Click **Apply Now**
- The **IP Address**, **Subnet mask**, and the **Router's IP Address** will appear in a few seconds



You are now connected to the Internet. If you still have problems connecting, please call the toll free support number!